

FEEL PROTECTED IN WATER

APPLICATIONS: STADIUMS/THE COMMERCIAL PLAZAS/RAILWAY STATION SQUARES/ETC.

FIX / OUTDOOR



User-Friendly Wide View Angle Super Slim Magnet High contrast Fast Installation Easy Repair Good Heat Control

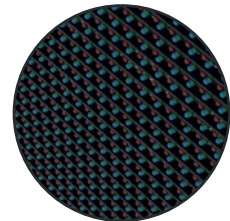
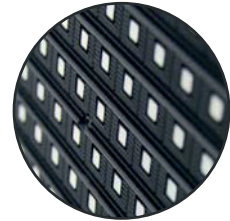
CABINET: 960X960MM
MODULE: 320X320MM



Outdoor: 6.67S / 8S / 10S / 10DS / 16S

- Multimode Splicing
- Wide Mask Brim
- Appearance Upgrade
- Fast Install And Dismantle
- Maintain Holes On Module
- Module Magnet
- Perfect Heat Dissipation
- Pressure Respirator

Outdoor: 6.67S / 8S / 10S / 10DS / 16S



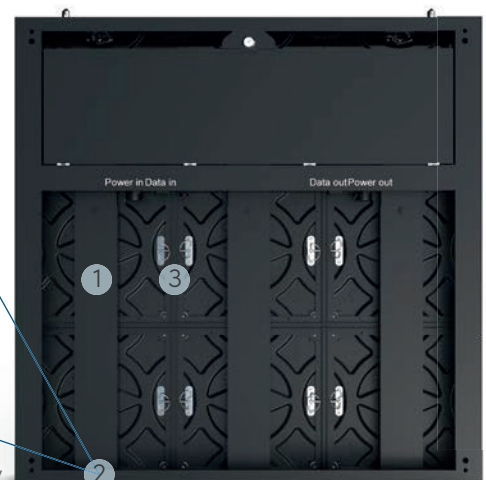
P10 HAS TWO VERSIONS
SMD AND DIP OPTION AVAILABLE

SPECIFICATIONS



1. Appearance

Simple black appearance , flat system box with a blowing gap. Rear module add star pattern shows beautiful .Ingenious design makes more fashion and different



2. Excellent design

1. Excellent design with concealed wires brings a better appearance
2. Location pin assist in locating and fixing the bottom of the wire box quickly
3. Fast lock makes the modules easier for operation



3

3. Appearance Upgrade

1. Increase heat dissipation holes in the back of the system box to speed up the cooling.
2. Only use 1set key controlling the System box make operation faster.
3. Reduce the suction holes make system box look more concise
4. The thickness of the cabinet is only 127mm and the weight have 53kg/panel (steel) and 29kg/panel (aluminum) two choices.
5. Save 3pcs AC fans in the original system box to make more space.

4. Full Front maintenance - Full Front installation

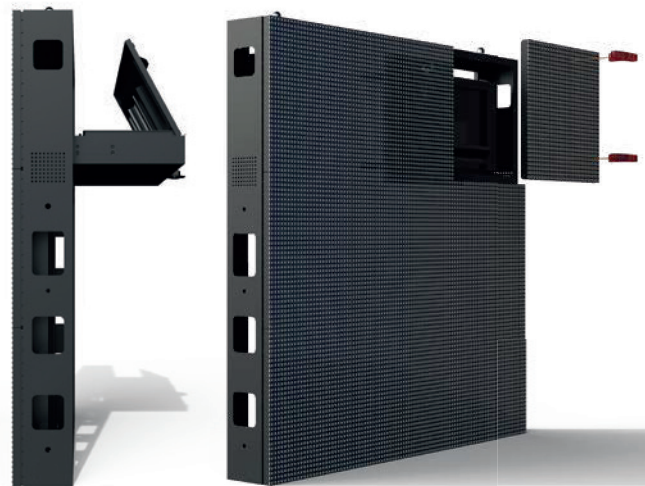
Save more space and makes outdoor advertisement more colorful!

Maintain holes on module, Fast install and dismantle

There are corresponding holes on the modules which connect the fast lock, it's very convenient to use screwdriver lock or dismantle the module from front side.



4



5

5. Module magnet sheet, Good for fast position

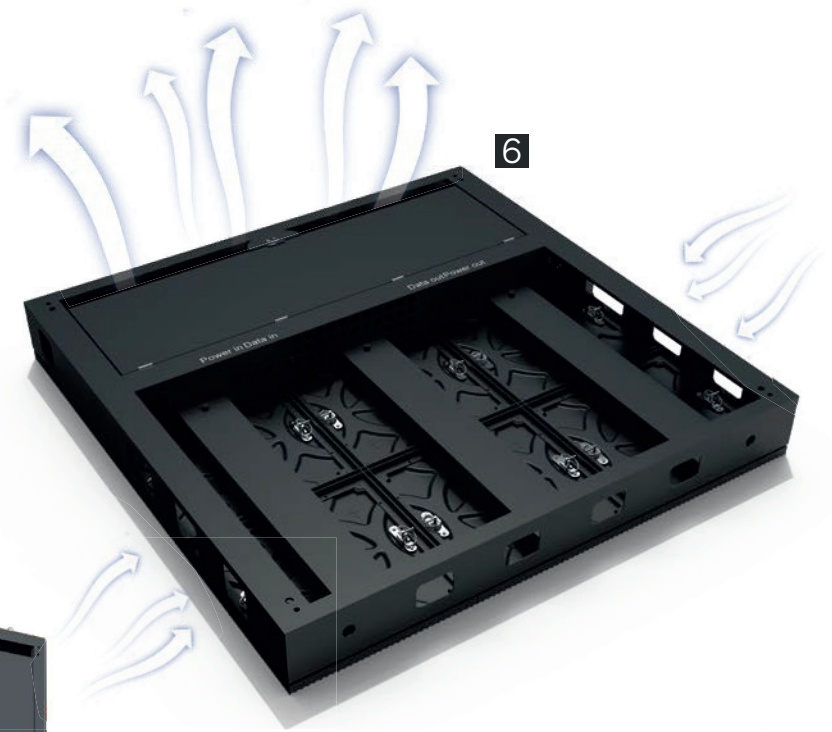
There are 4PCS magnets on module and frame which are helping for fast position and ensure module flatness.

Pressure respirator

The cooling respirator is constructed on rear cover of module to maintain balance of the air pressure of both interior and exterior to release heat, which can effectively undermine the mask damages of pressure difference caused by temperature changes.

6. Perfect heat dissipation

The power with a big fan that blows through the gap can speed up heat dissipation to ensure the display effect and prolong the display use life.



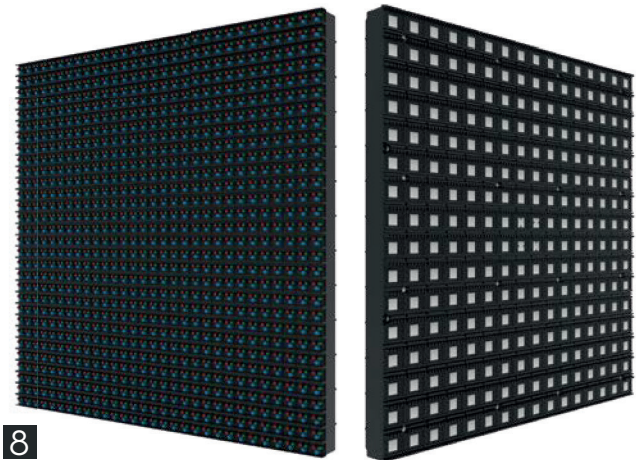
7. Wire box

Each cabinet have three wire boxes to conceal wires which can protect the wires against water meanwhile keep beauty of the appearances.



8. Wide mask brim

Wide module mask brim design can prevent dust and water into cabinet and then protect LED lamps.



8

9. key lock & L-type tensioning design

Renew key lock
With locating pin & slot
Press in and then twist when open the lock

L-type tensioning design
simple and convenient
The system box can be maintained directly



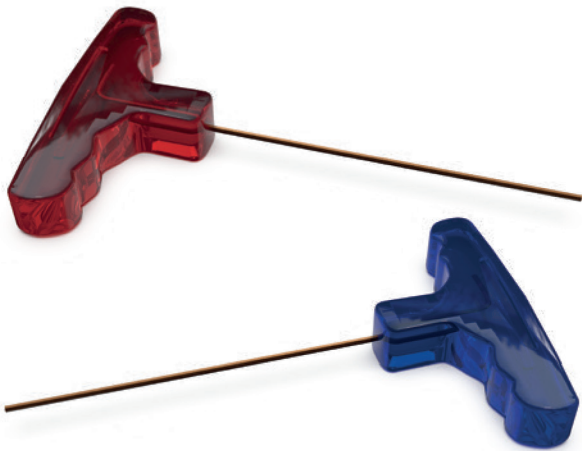
9

HEAT DISSIPATION

Bigger circular holes speed up heat dissipation much quickly than traditional small holes .



ACCESSORIES

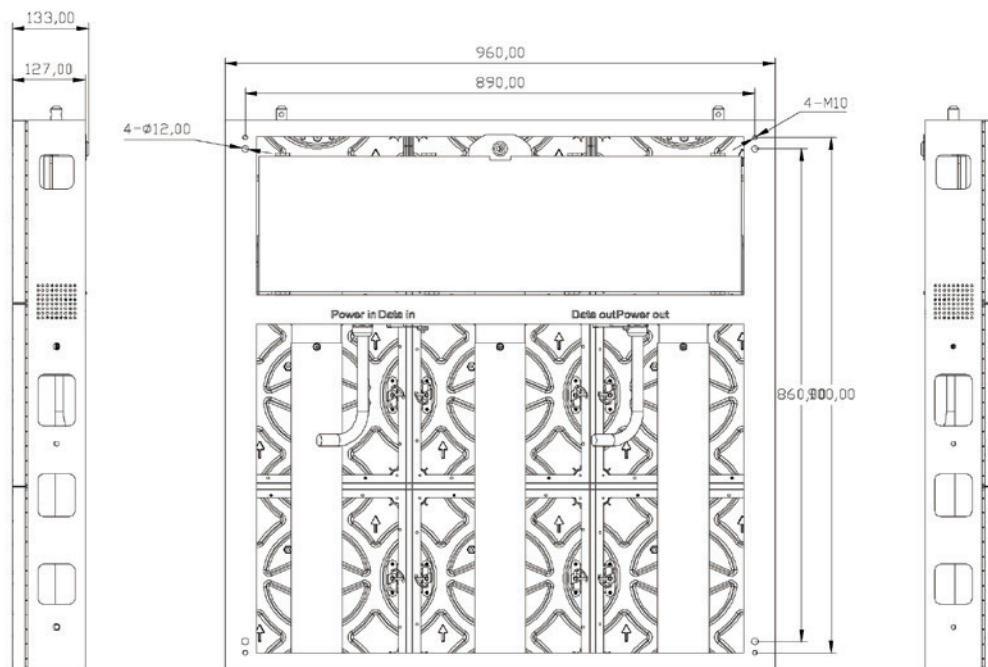


Maintenance Tool



Connector Install

DRAWING-960X960



SPECIFICATIONS

Series	6.67S	8S	10S	10DS	16S
Pixel pitch	6.67mm	8mm	10mm	10mm	16mm
Panel dimensions	960x960x127mm	960x960x127mm	960x960x127mm	960x960x127mm	960x960x127mm
Module size	320x320mm	320x320mm	320x320mm	320x320mm	320x320mm
Weight per panel	29 kg	29 kg	29 kg	53 kg	29 kg
Driving type	1/6 scan	1/4 scan	1/2 scan	1/4 scan	static
Refresh rate	1920-3840Hz	1920-3840Hz	1920-3840Hz	960-1920Hz	1920-3840Hz
Brightness	5500nits	5500nits	5500nits	7000nits	5500nits
IP rating	IP65/IP54	IP65/IP54	IP65/IP54	IP65/IP54	IP65/IP54
Max Power	563 W/Panel	555 W/Panel	563 W/Panel	507 W/Panel	602 W/Panel
Average Power	188 W/Panel	185 W/Panel	188 W/Panel	169 W/Panel	202 W/Panel
Lifetime	100000	100000	100000	100000	100000